

Accessories

For Fitting of Products with Big Terminal Casing BC and BC/L



Set of Seals

O-rings/sealing inserts



Terminal Casing BC

Material: PP

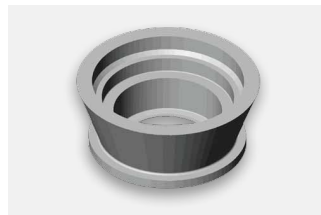
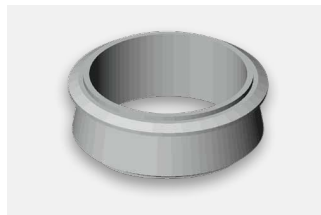
Terminal Casing BC/L

Material: PVDF

Mounting Sleeve EM

for space-saving fitting in supports or in tank cross-beams. Drill-hole diameter: $\varnothing 87$ mm to $\varnothing 90$ mm.

Material: EPDM



Holding Sleeve HM

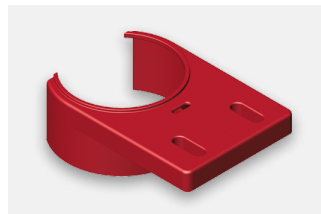
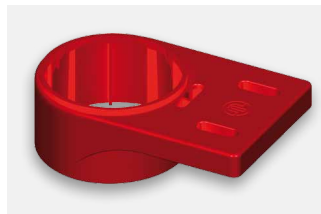
for fixing in tank cross-beams in cases of high liquid temperature ($> 60^\circ\text{C}$) and exposure of the underside of the casing to highly concentrated steam. Drill-hole diameter $\varnothing 70$ mm to $\varnothing 76$ mm.

Material: EPDM

Support HB

for simple fixing to the tank rim (e.g. for immersion heaters with a max. nominal tube length of 800 mm).

Material: PP or PVDF (HB/L)



Support HWB

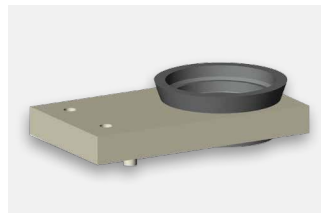
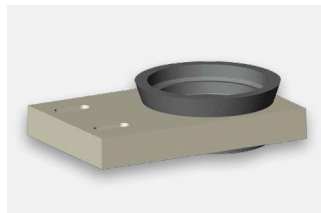
for fixing long probes and angular immersion heaters.

Material: PP or PVDF (HWB/L)

Support SHB

with integrated holding sleeve HM for fixing immersion heaters with nominal tube length > 800 mm.

Material of support: PP
Material of sleeve: EPDM



Support THB

with integrated holding sleeve HM for fixing immersion heaters with Anti-Burn-System.

Material of support: PP
Material of sleeve: EPDM

Protective Tube SRF

with a welded support and integrated holding sleeve protects „sensitive“ immersion tubes (porcelain, glass, PTFE) against mechanical damage. It enables safe fixing of very long immersion tubes up to 2000 mm to the tank rim.

Material of protective tube and support: PP
Material of holding sleeve: EPDM



Mounting Wrench SB

for opening and closing the terminal cap of big terminal casings BC, as well as dismantling the screw thread and the lead screw fixing.

Material: Grivory GVN



Accessories

For Fitting of Products with Small Terminal Casing LC and LC/L

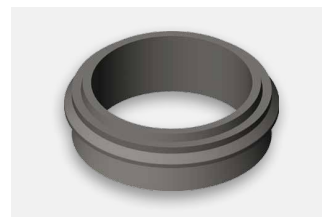


Set of Seals
O-rings / sealing inserts



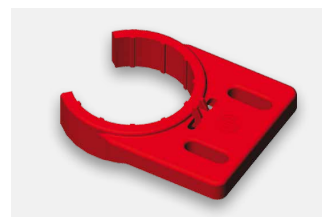
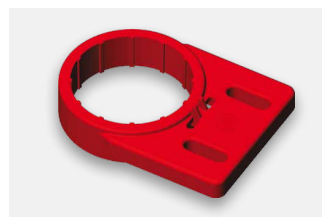
Terminal Casing LC
Material: PP
Terminal Casing LC/L
Material: PVDF

Mounting Wrench SL
for opening and closing the terminal cap of small terminal casings LC and the lead screw fixing.
Material: Grivory GVN



Mounting Sleeve ML
enables space-saving fitting in container lid or tank cross-beams. Drill-hole diameter: Ø 63 mm.
Material: EPDM

Support HL
is screwed firmly onto the tank rim and the terminal casing LC is a simple push-fit.
Material: PP or PVDF (HL/L)



Support HWL
for fixing long probes.
Material: PP or PVDF (HWL/L)

Recommendations for Usage

As with all products with terminal casing care has to be taken, when installing them on the container rim, that the terminal casing does not submerge in the process liquid or is exposed to highly concentrated steam. Direct exposure of the underside of the casing to steam must be prevented by suitable installation measures (i.e. holding sleeve HM or a flange)

Service

Every process liquid puts specific demands on the materials of the products used. Please see our "Resistance List" showing the chemical resistance of the materials often used in the most common solutions. For efficient planning of heating your container or system we offer you our computer-aided calculation of the energy necessary for heating up the treatment liquids to the temperature you require and maintaining it. Take advantage of our service.