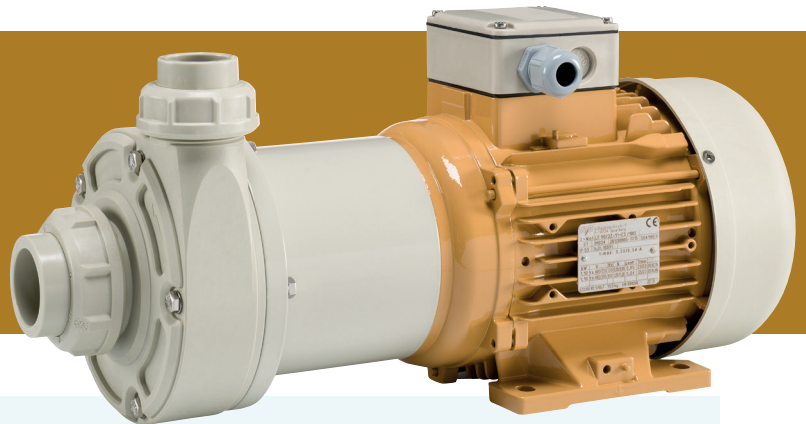


## HORIZONTAL PUMPS

### Magnetic drive

### M110 .. M400 - PP/PVDF



M110-PP

## 44 - 132 gpm

Magnetic drive pump, sealless and therefore leak free and safe for people, environment and equipment.

The M series combines optimized hydraulic efficiency with a robust, compact and reliable construction. This results in maximum installation uptime and a long service life, providing best in class performance, technically and economically. The M series is designed and manufactured for transfer and circulation of chemicals. Easy to build-in and -out, specially for OEM configurations.

### Features

- Magnetic drive
- Sealless, 100% leak free
- Ceramic/PTFE bearings
- Including complete +GF+ union ends
- EPDM elastomers
- Max. temperature PP 80°C, PVDF 100°C
- Stainless steel fasteners and type shields
- Extra strong neodymium magnets
- Single stage operation
- High quality European, purpose designed electric motor:
  - 3 phase, 50/60 Hz, 2900/3500 rpm, IP55, multi voltage
  - with double layer 2C chemical resistant coating
  - including fan cover and wiring box
  - suitable for frequency drive control

### Options

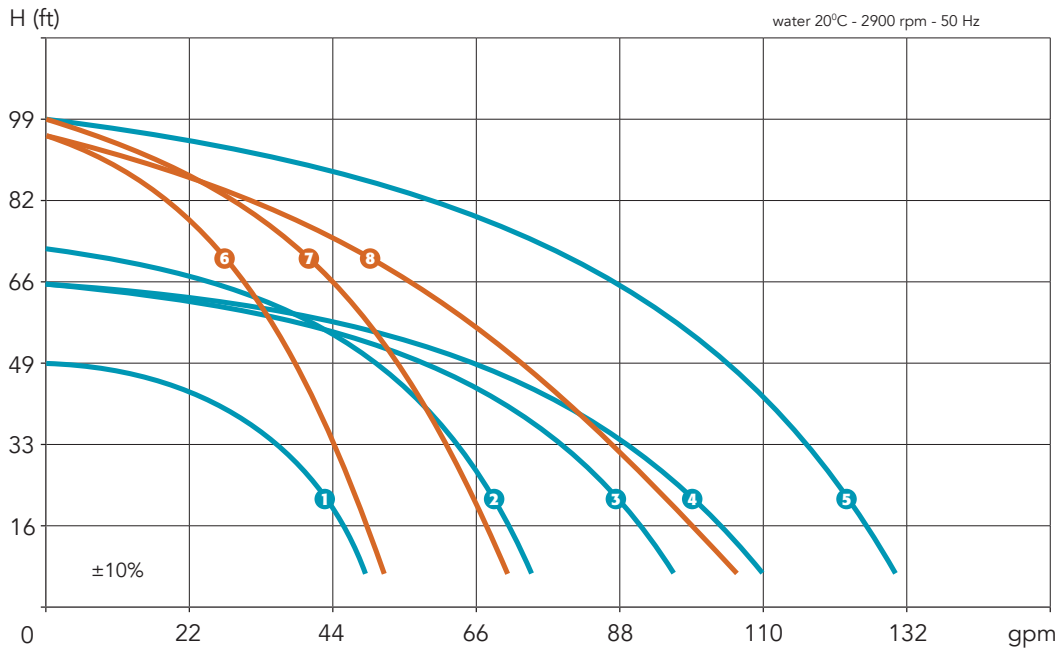
- Hose or flange connections
- Union sockets in PVC or CPVC
- Specific bearings and elastomers
- Dry run protection
- Priming chamber
- Electric motor options:
  - motor mounted frequency drive
  - EMC compatibility
  - PTC thermistor
  - thermal overload incl. switch and lead
  - single phase
  - specific voltages
  - electrical lead (4 m)
  - other RAL colours

Type	Material	Q max (gpm)	H max (ft)	Motor		I nom. (A) 400V-50Hz	In (d/DN)	Out (d/DN)	Net weight (kg)	
				kW	HP				PP	PVDF
M110	PP or PVDF	48	53	1,1	1½	2,25	40/32	32/25	15	17
M150		79	73	1,5	2	2,86	50/40	40/32	25	27
M220		105	70	2,2	3	4,13	63/50	50/40	25	27
M300		114	70	3	4	5,75	63/50	50/40	31	33
M400		132	102	4	5½	7,40	63/50	50/40	38	40
M150-H		52	92	1,5	2	2,86	63/50	50/40	25	27
M220-H		70	92	2,2	3	4,13	63/50	50/40	25	27
M300-H		88	99	3	4	5,75	63/50	50/40	29	31

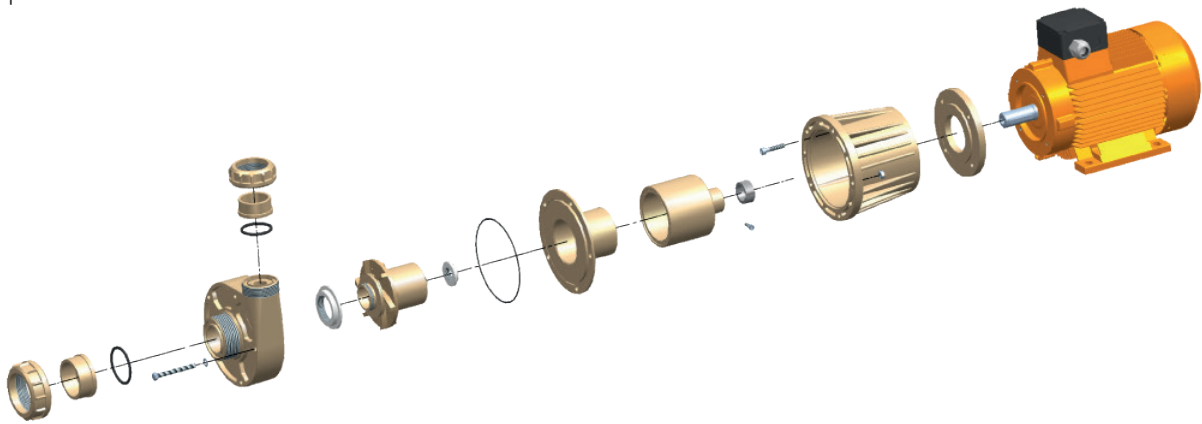
Auswahlbeispiel: M110-PP

T +31 497 339 389  
info@hendor.com

[WWW.HENDOR.COM](http://WWW.HENDOR.COM)



Exploded view



Dimensions

Type	"D"	"I"	"N"	In	Out
M110	410	205	156	40/32	32/25
M150	505	236	170	50/40	40/32
M220	523	249	200	63/50	50/40
M300	553	254	195	63/50	50/40
M400	570	279	225	63/50	50/40
M150-H	505	236	170	63/50	50/40
M220-H	523	249	200	63/50	50/40
M300-H	553	254	195	63/50	50/40

