

500 - 3,000 us-gph

Typical applications

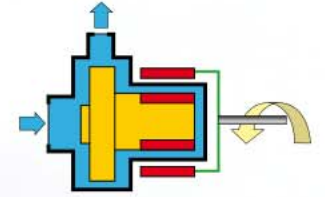
- Ideal for clean or slightly contaminated acids and alkalines
- Suitable for most plating solutions
- Not suitable for electroless nickel and abrasive solutions or solutions which contain ferrous particles

Features

- Magnetic drive
- Sealless, therefore leakfree
- Provide extra safety factor for aggressive and expensive liquids
- Standard with GF union connections with a choice of sockets, available in PP, PVDF and CPVC
- Max. temp. PP 176°F, PVDF 212°F
- Motor with two component Polyurethane for excellent chemical resistance

Options

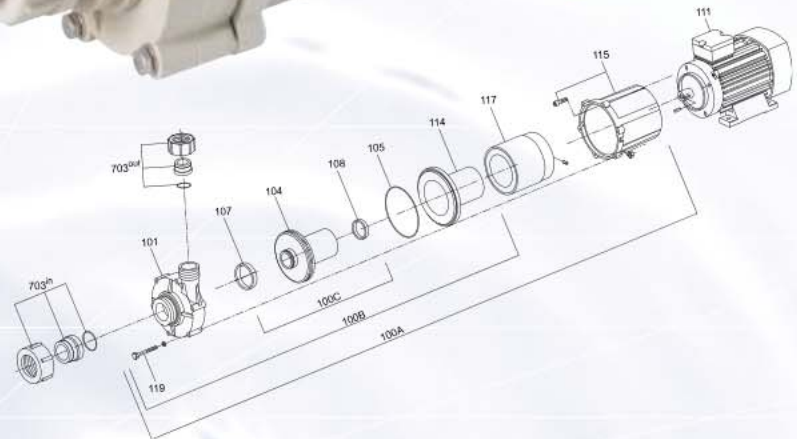
- Hose adapters
- Flanges
- Priming chamber
- Dry run protection



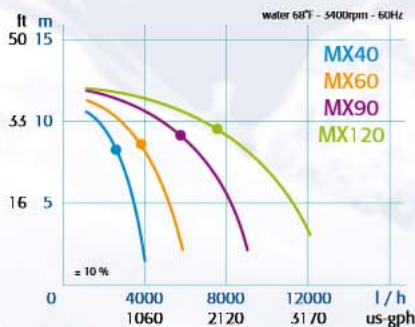
MX90
self priming



MX60

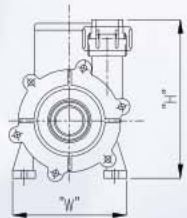


Magnetic drive pumps MX40 .. 120 - PP/PVDF



Best Efficiency Point (BEP)

Type	Motor HP	Max SG at BEP	Net weight lbs	In pipe size	Out pipe size	Dimensions		
						L	W	H
MX40	1/4	1,1	15-1/2	1"	3/4"	15-1/2"	5"	1"
MX60	1/3	1	15-1/2	1"	3/4"	15-1/2"	5"	1"
MX61	1/2	1,3	22	1"	3/4"	16-1/2"	5-1/2"	7-1/4"
MX62	3/4	1,5	24-1/4	1"	3/4"	16-1/2"	5-1/2"	7-1/4"
MX90	1/2	1,2	22	1"	3/4"	16-1/2"	5-1/2"	7-1/4"
MX91	3/4	1,4	24-1/4	1"	3/4"	16-1/2"	5-1/2"	7-1/4"
MX120	3/4	1,3	24-1/4	1-1/4"	1"	18"	5-1/2"	8-1/2"



www.hendor.com

Hendor-PE, Inc.
55 Concourse Way Greer, SC 29650
Phone 864-879-0888 Fax 864-879-4237
usa@hendor.com

